

1  $\mu\text{m}$

Mag = 13.00 K X

EHT = 5.00 kV

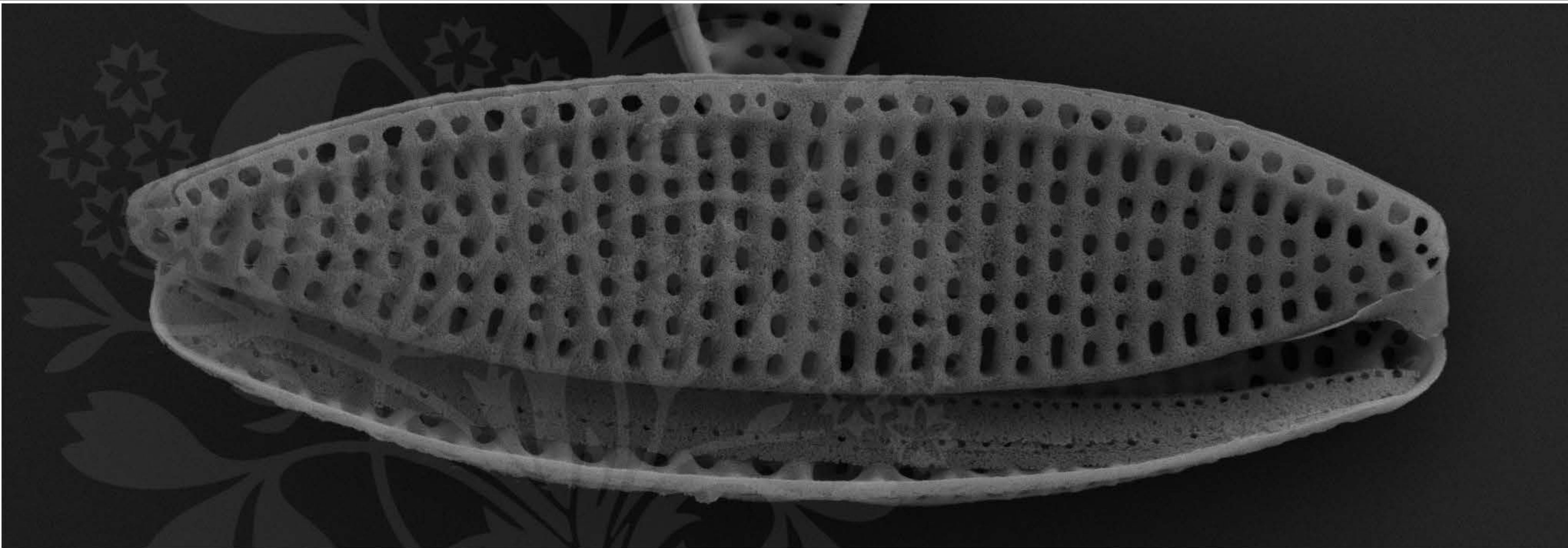
Signal A = SE2 Date :6 Jun 2017

WD = 4.3 mm

File Name = TCC571\_01.tif







1  $\mu\text{m}$

Mag = 13.00 K X

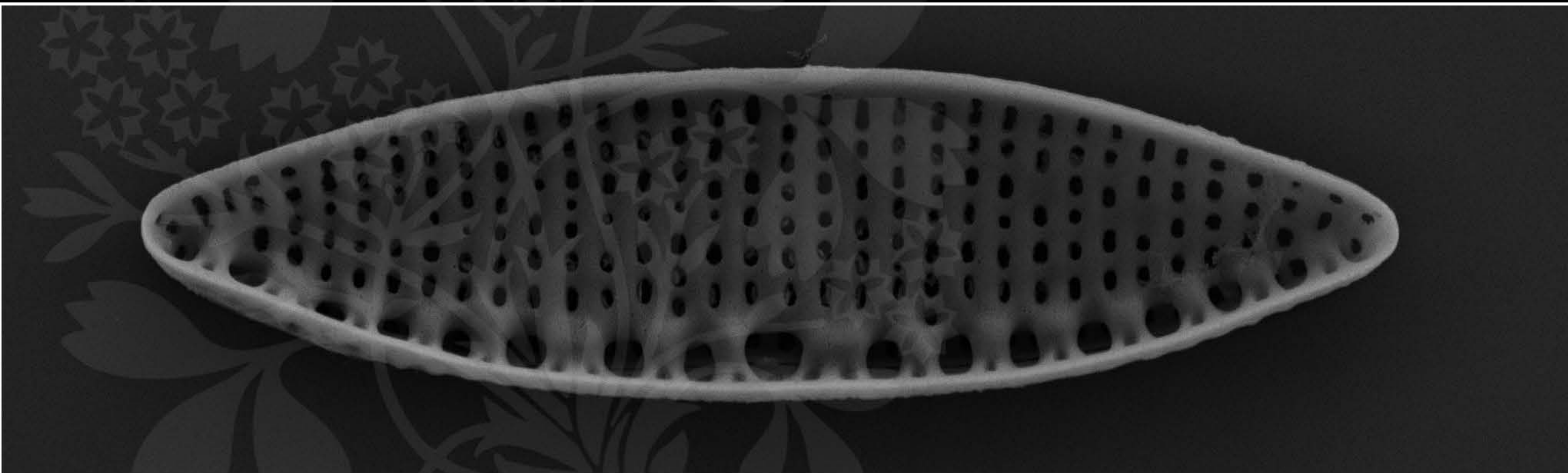
EHT = 5.00 kV

Signal A = SE2 Date :6 Jun 2017

WD = 4.3 mm

File Name = TCC571\_02.tif





1  $\mu\text{m}$

Mag = 13.00 K X

EHT = 5.00 kV

Signal A = SE2 Date :6 Jun 2017

WD = 4.3 mm

File Name = TCC571\_03.tif







300 nm  
└───┘

Mag = 25.02 K X

EHT = 5.00 kV

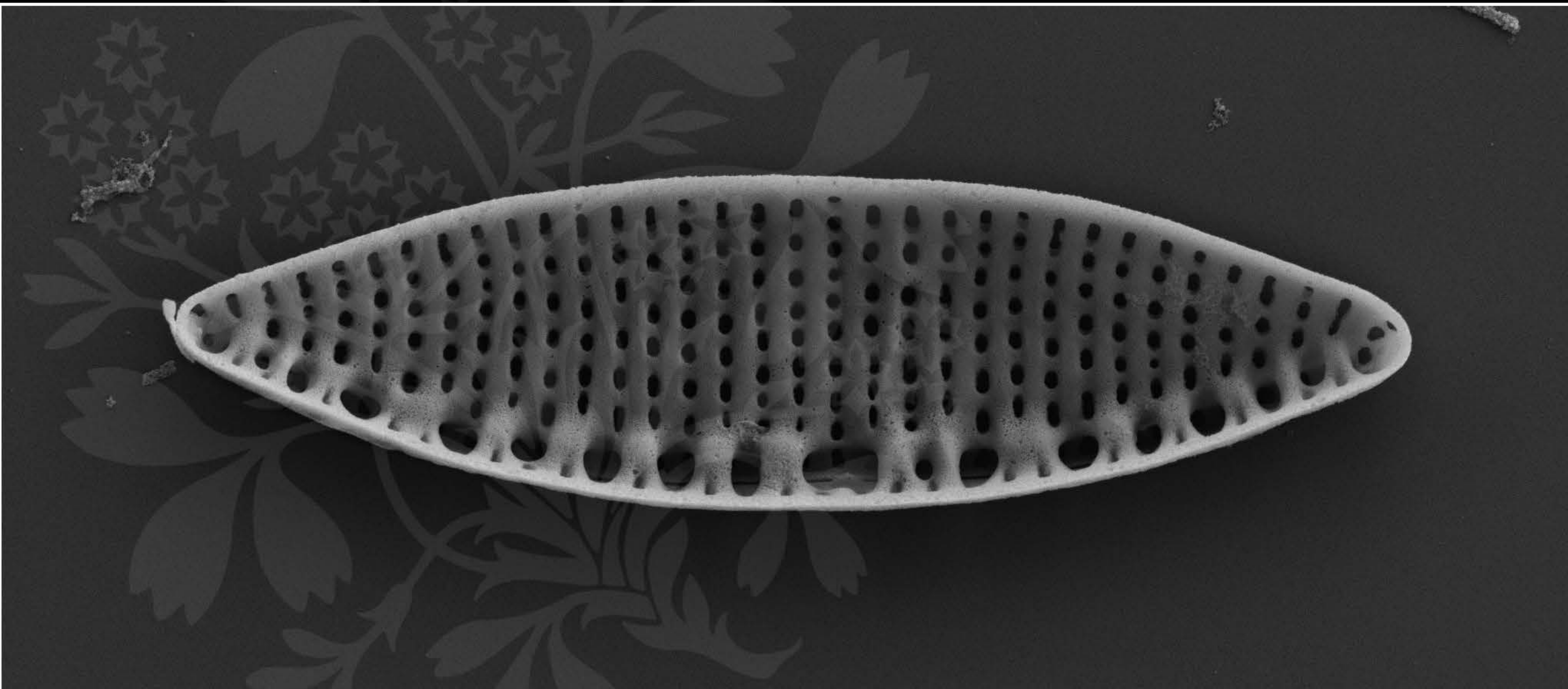
Signal A = SE2 Date :6 Jun 2017

WD = 4.3 mm

File Name = TCC571\_04.tif







1  $\mu$ m  
|-----|

Mag = 6.00 K X

EHT = 5.00 kV

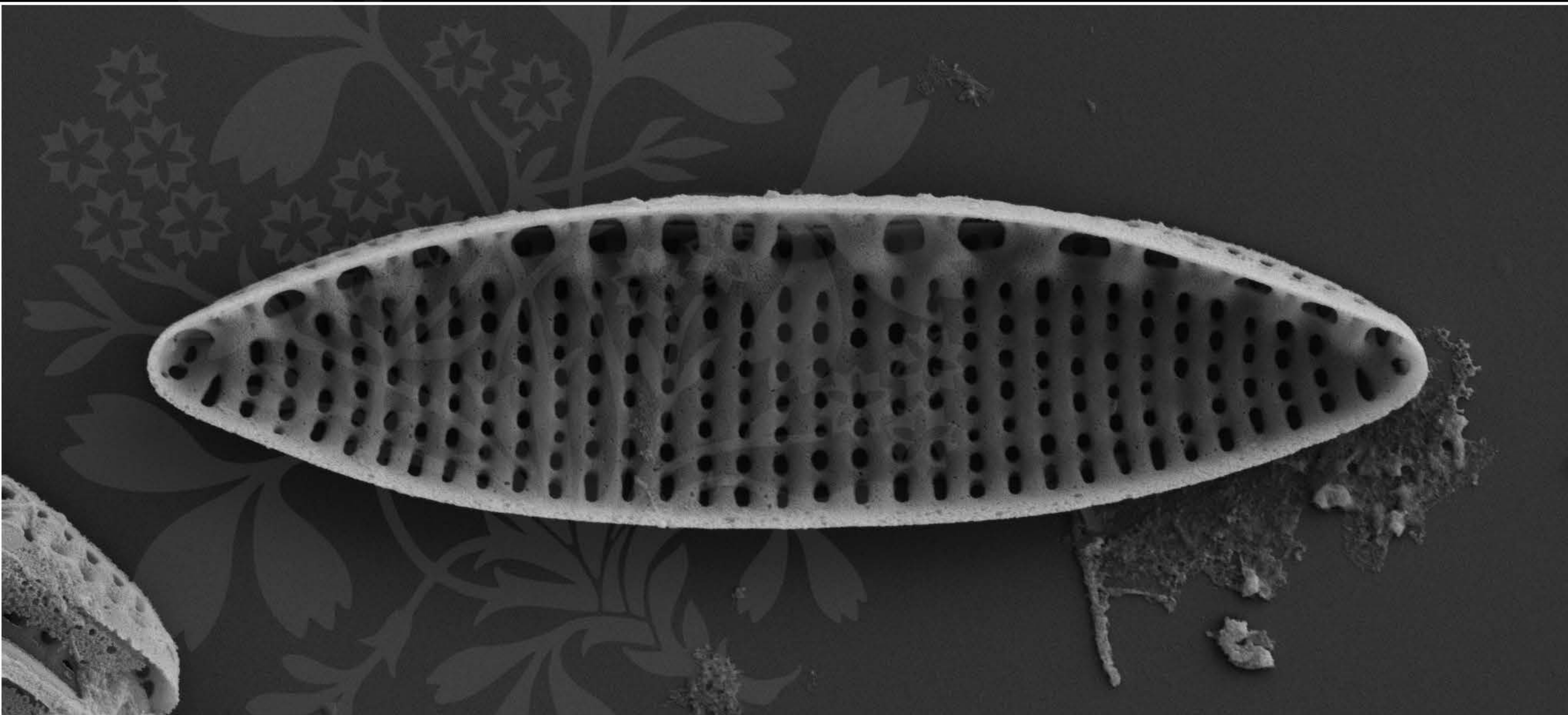
Signal A = SE2 Date : 16 Mar 2020

WD = 4.4 mm

File Name = TCC571\_05.tif







1  $\mu$ m  
|-----|

Mag = 6.00 K X

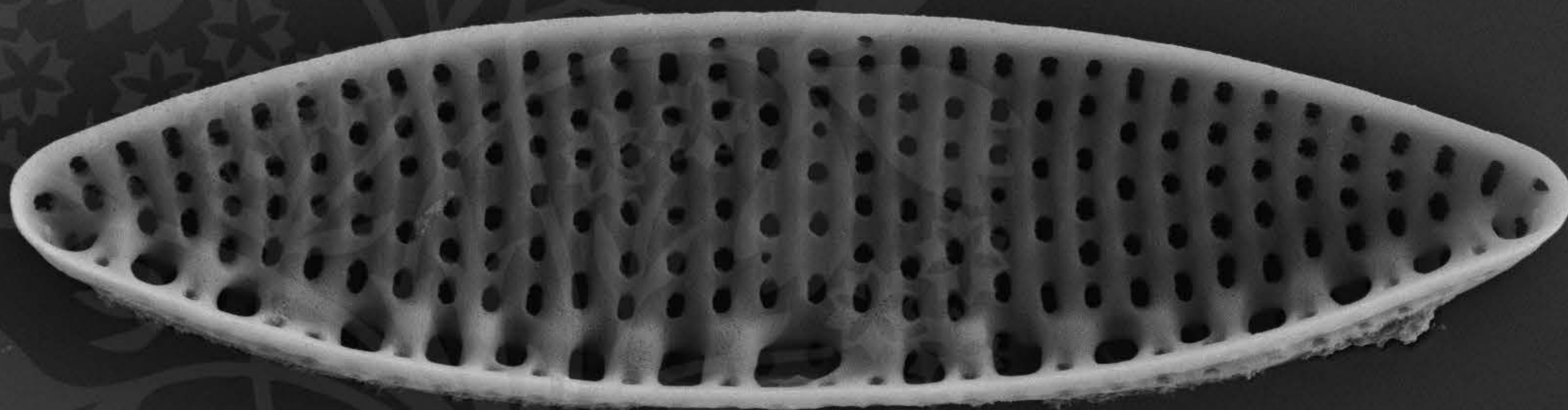
EHT = 5.00 kV

Signal A = SE2 Date : 16 Mar 2020

WD = 4.4 mm

File Name = TCC571\_06.tif





1  $\mu$ m  
|-----|

Mag = 6.00 K X

EHT = 5.00 kV

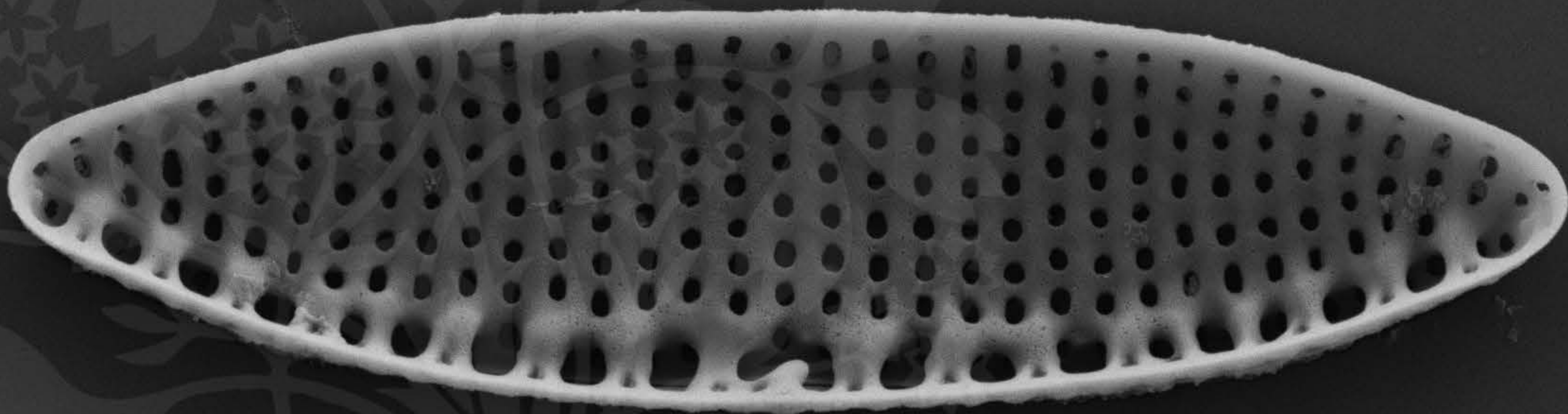
Signal A = SE2 Date : 16 Mar 2020

WD = 4.4 mm

File Name = TCC571\_07.tif







1  $\mu$ m  
|-----|

Mag = 6.00 K X

EHT = 5.00 kV

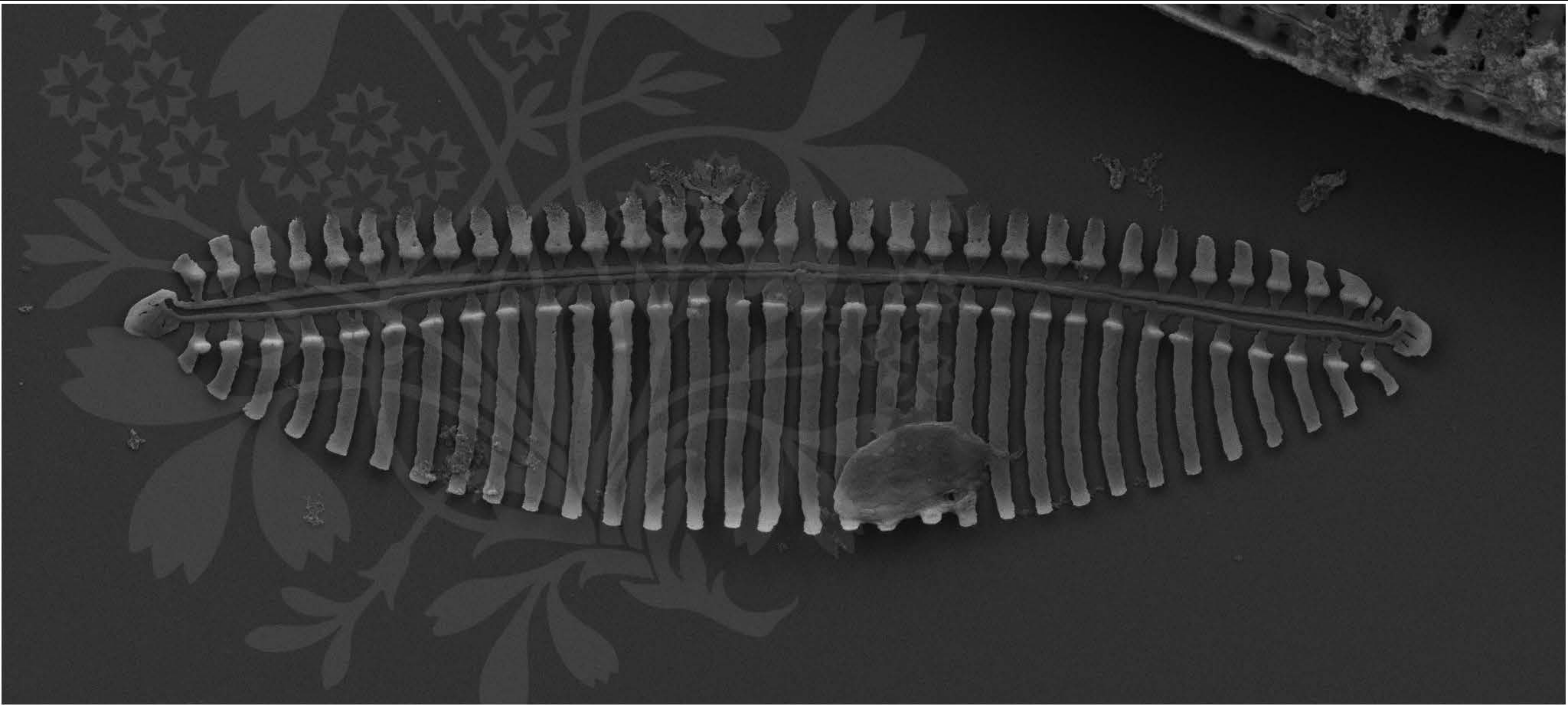
Signal A = SE2 Date : 16 Mar 2020

WD = 4.4 mm

File Name = TCC571\_08.tif







1  $\mu$ m  
|

Mag = 6.00 K X

EHT = 5.00 kV

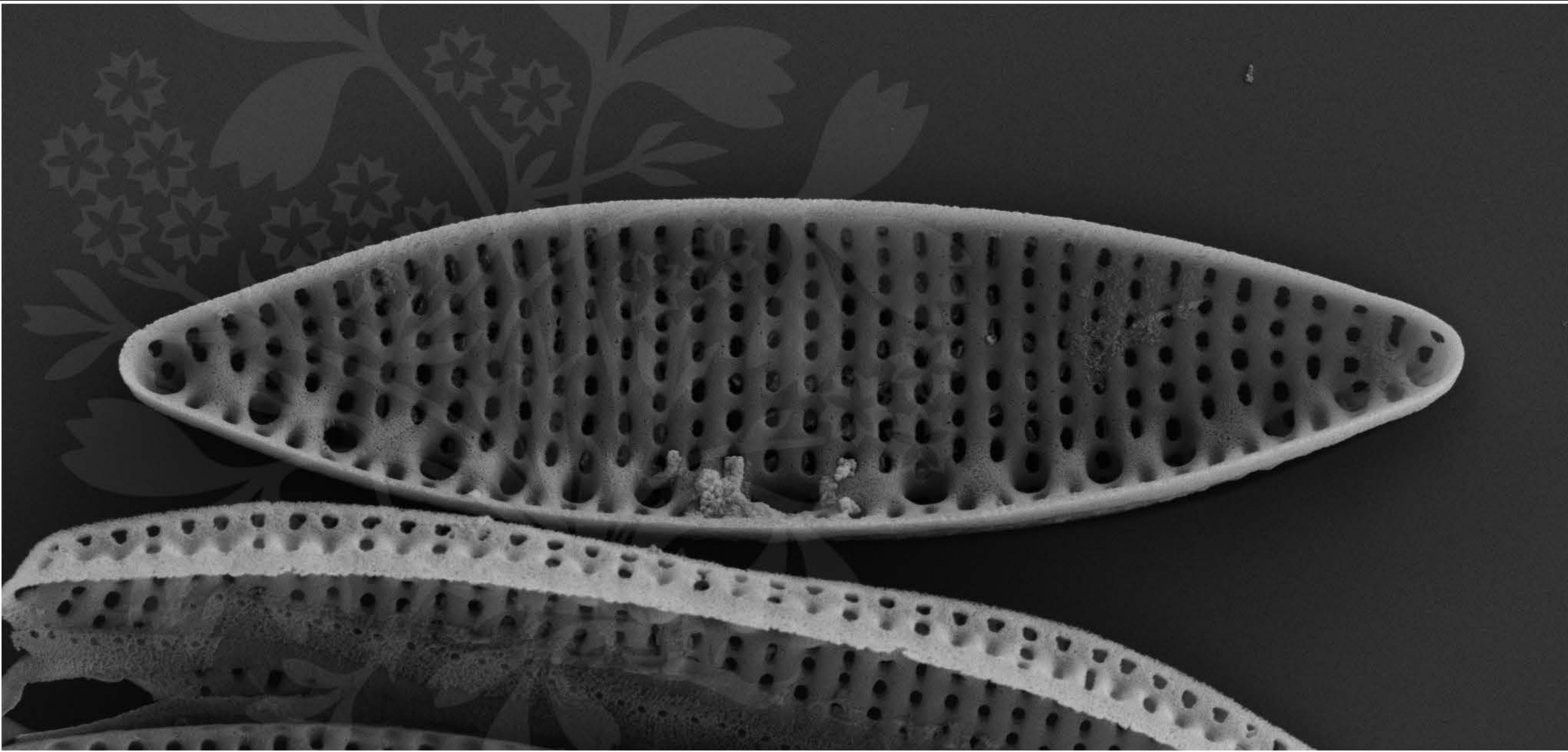
Signal A = SE2 Date : 16 Mar 2020

WD = 4.4 mm

File Name = TCC571\_09.tif







1  $\mu$ m  
|-----|

Mag = 6.00 K X

EHT = 5.00 kV

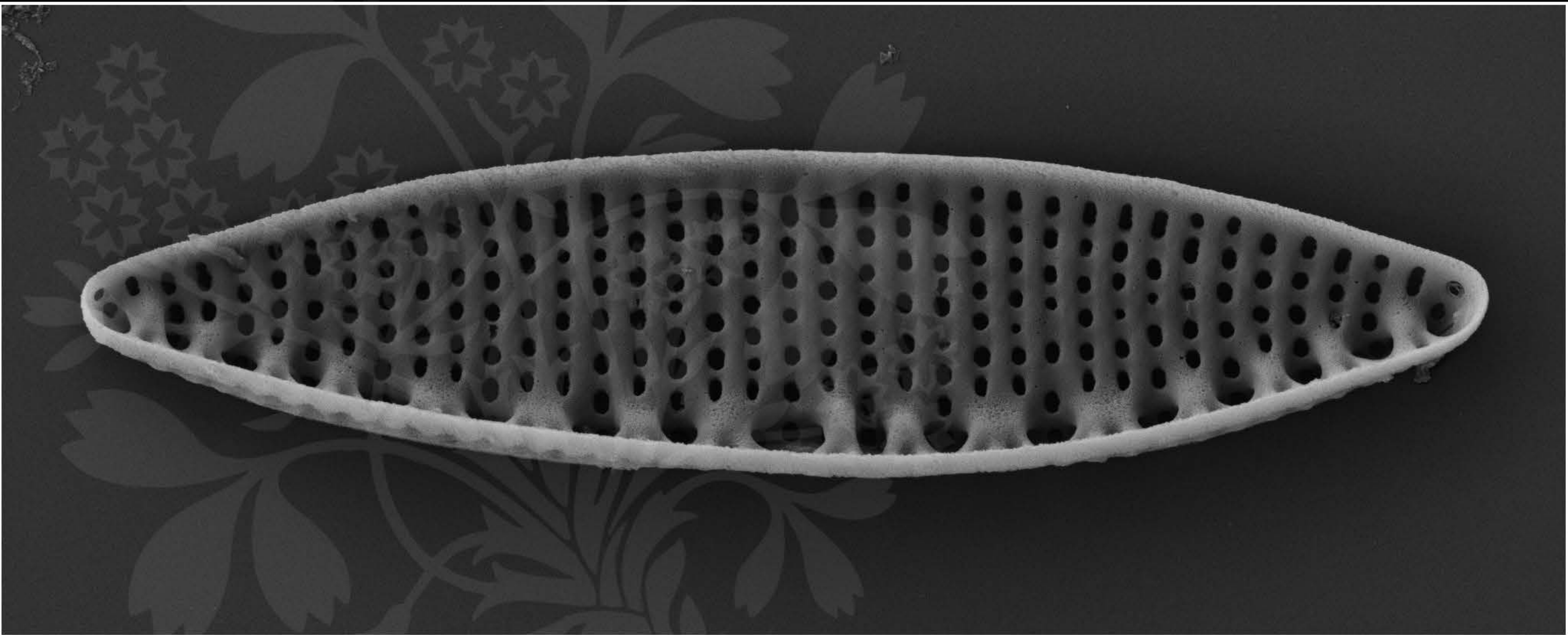
Signal A = SE2 Date : 16 Mar 2020

WD = 4.4 mm

File Name = TCC571\_10.tif







1  $\mu$ m  
|-----|

Mag = 6.00 K X

EHT = 5.00 kV

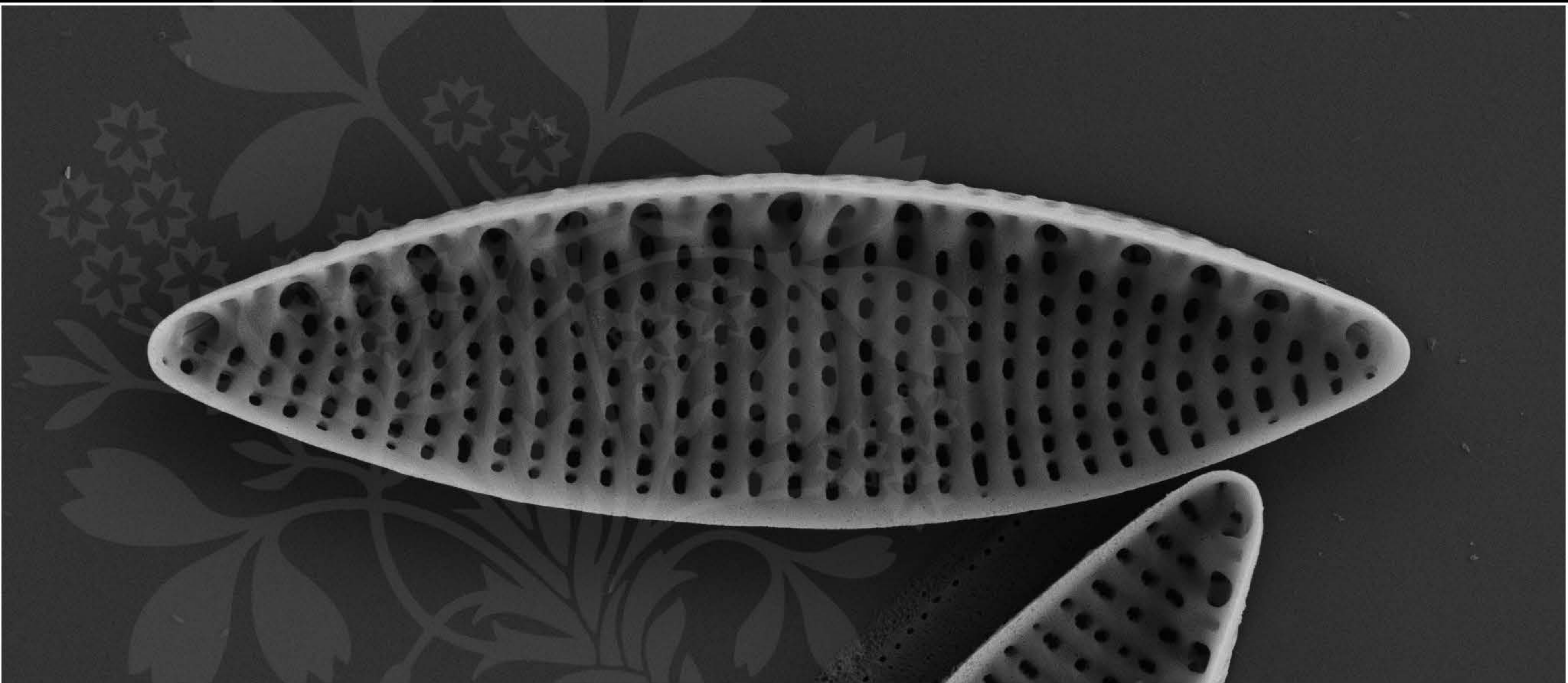
Signal A = SE2 Date : 16 Mar 2020

WD = 4.4 mm

File Name = TCC571\_11.tif







1  $\mu$ m  
|-----|

Mag = 6.00 K X

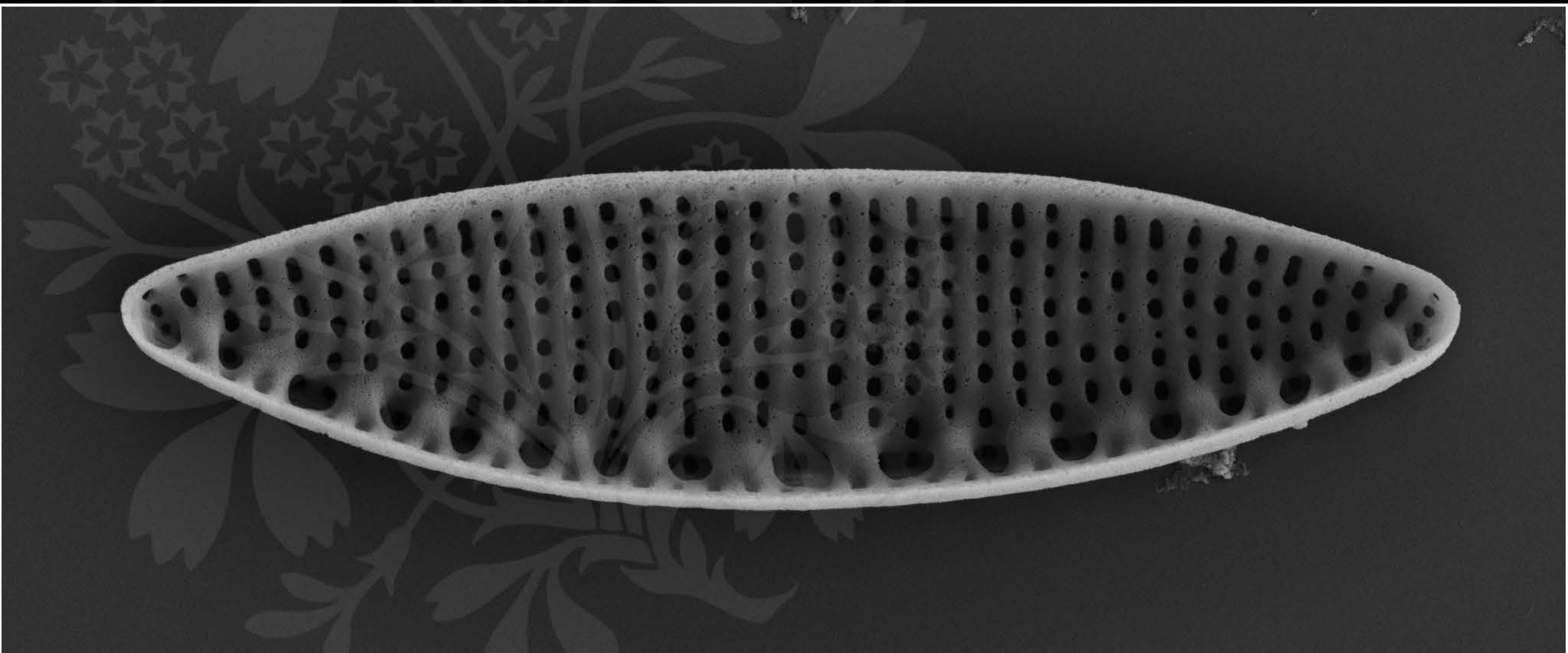
EHT = 5.00 kV

Signal A = SE2 Date : 16 Mar 2020

WD = 4.4 mm

File Name = TCC571\_12.tif





1  $\mu$ m  
|-----|

Mag = 6.00 K X

EHT = 5.00 kV

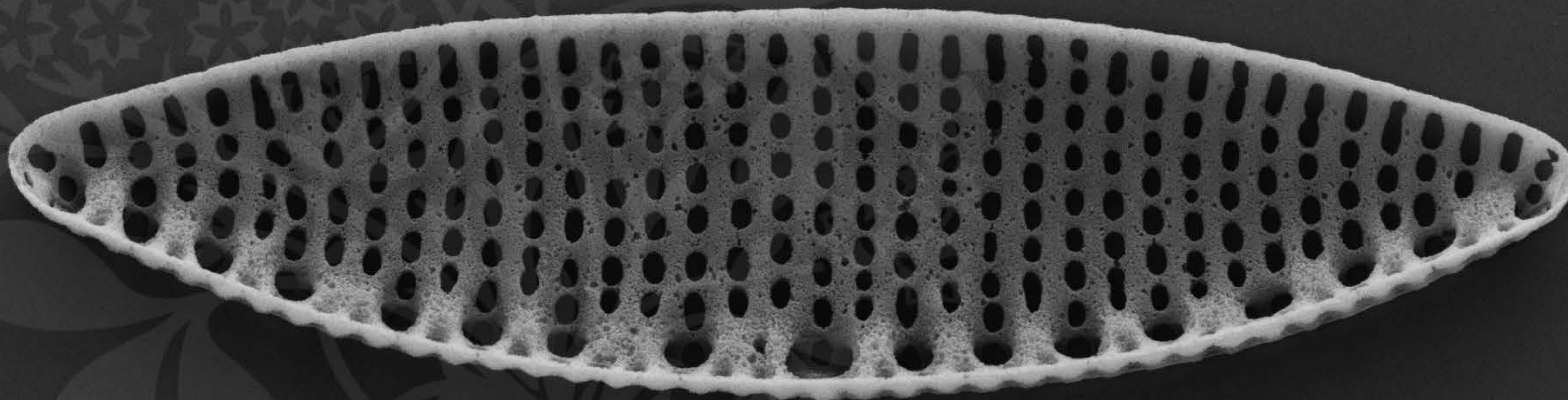
Signal A = SE2 Date : 16 Mar 2020

WD = 4.4 mm

File Name = TCC571\_13.tif







1  $\mu$ m  
|-----|

Mag = 6.00 K X

EHT = 5.00 kV

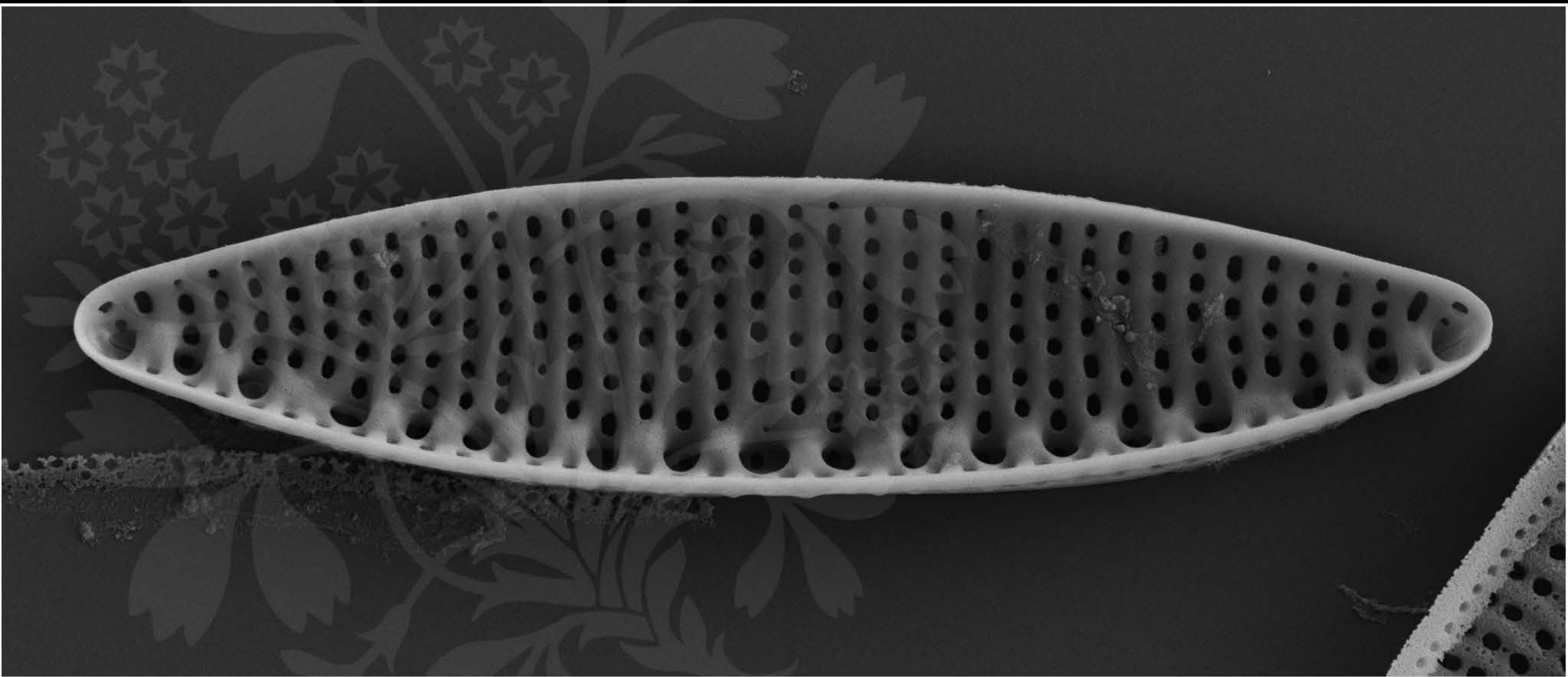
Signal A = SE2 Date : 16 Mar 2020

WD = 4.4 mm

File Name = TCC571\_14.tif







1  $\mu$ m

Mag = 6.00 K X

EHT = 5.00 kV

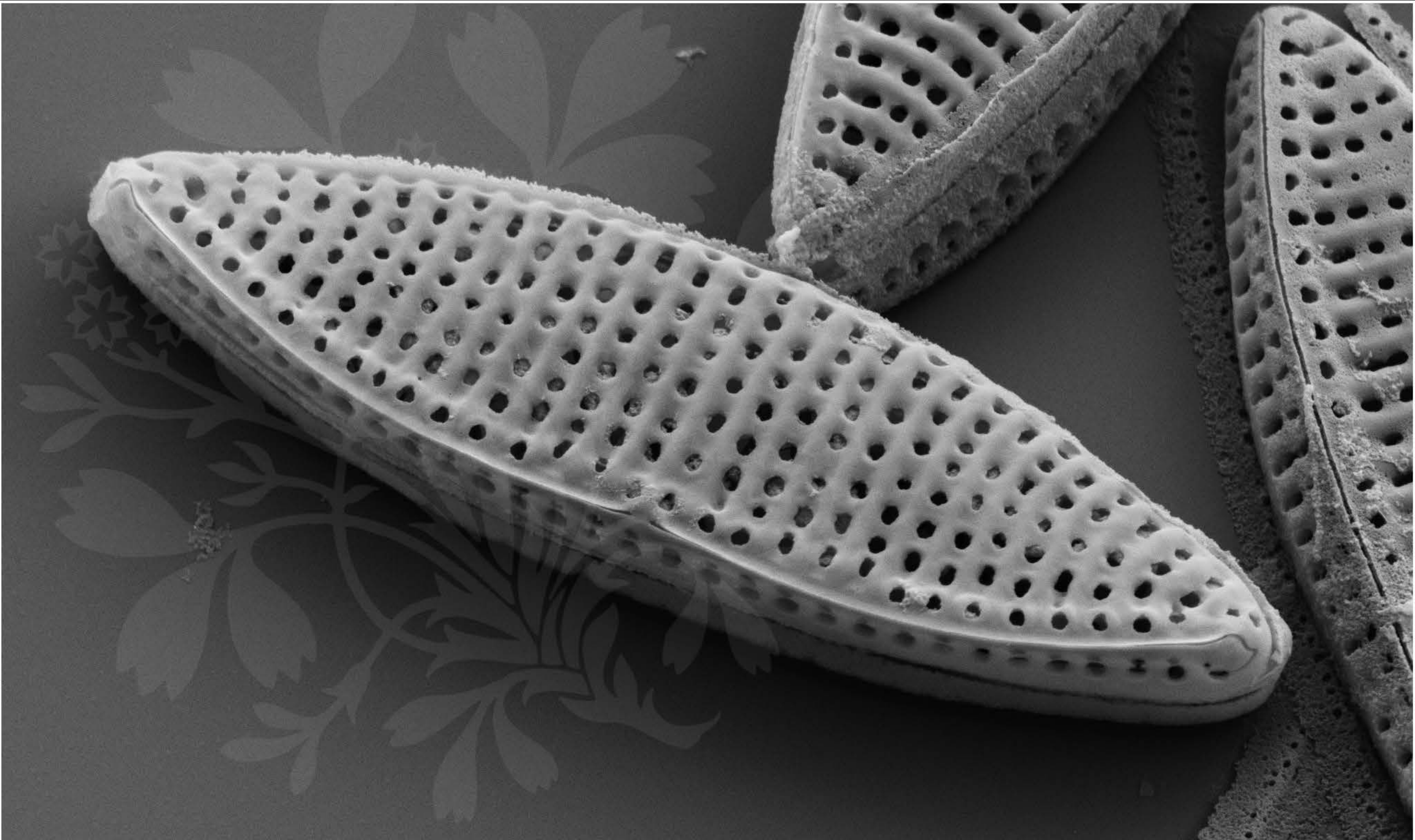
Signal A = SE2 Date : 16 Mar 2020

WD = 4.4 mm

File Name = TCC571\_15.tif







1  $\mu\text{m}$



Mag = 7.50 K X

EHT = 5.00 kV

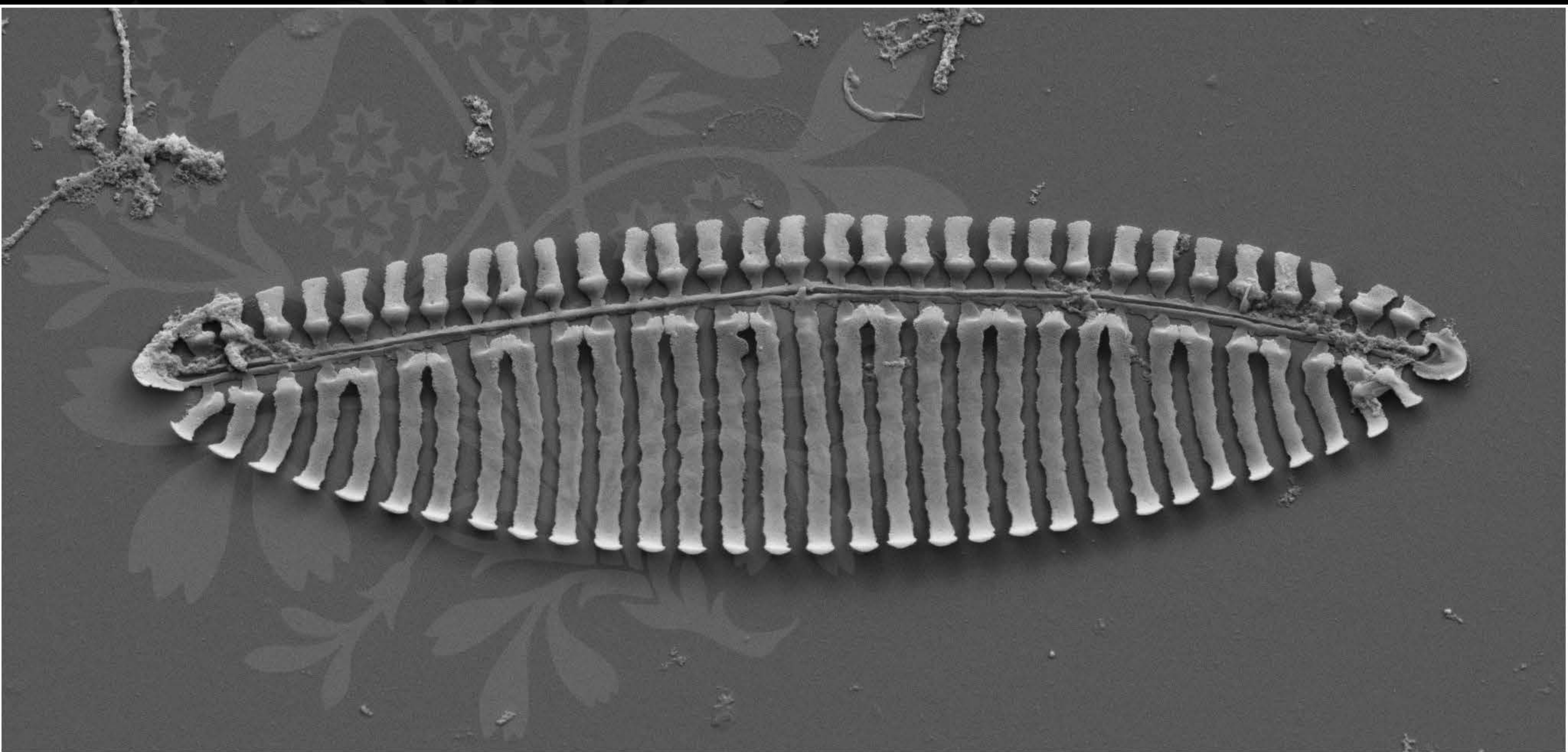
Signal A = SE2 Date : 16 Mar 2020

WD = 4.4 mm

File Name = TCC571\_16.tif







1  $\mu$ m  
|-----|

Mag = 6.50 K X

EHT = 5.00 kV

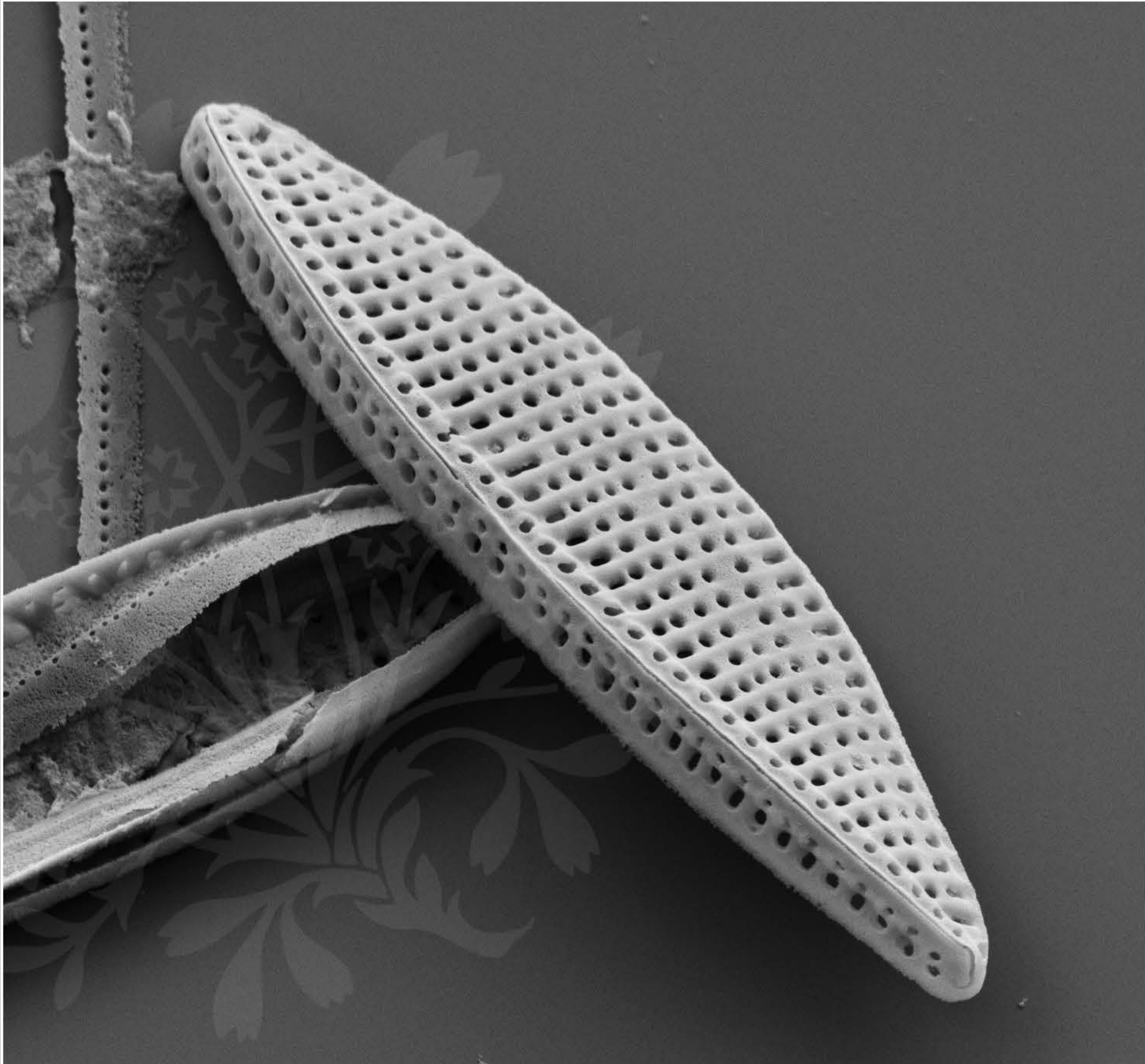
Signal A = SE2 Date : 16 Mar 2020

WD = 4.4 mm

File Name = TCC571\_17.tif







1  $\mu$ m  
|

Mag = 5.50 K X

EHT = 5.00 kV

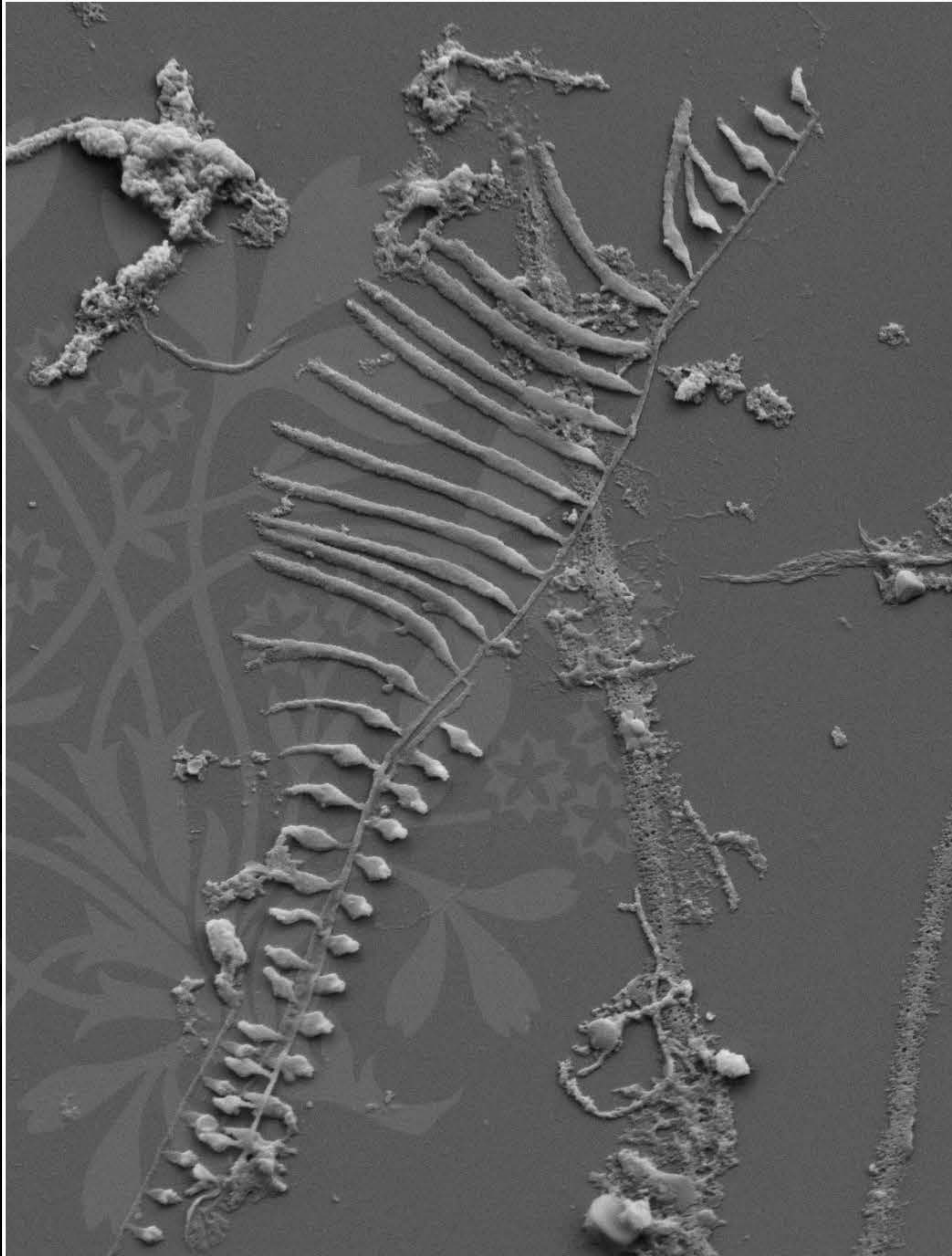
Signal A = SE2 Date : 16 Mar 2020

WD = 4.4 mm

File Name = TCC571\_18.tif







1  $\mu$ m  
|-----|

Mag = 6.00 K X

EHT = 5.00 kV

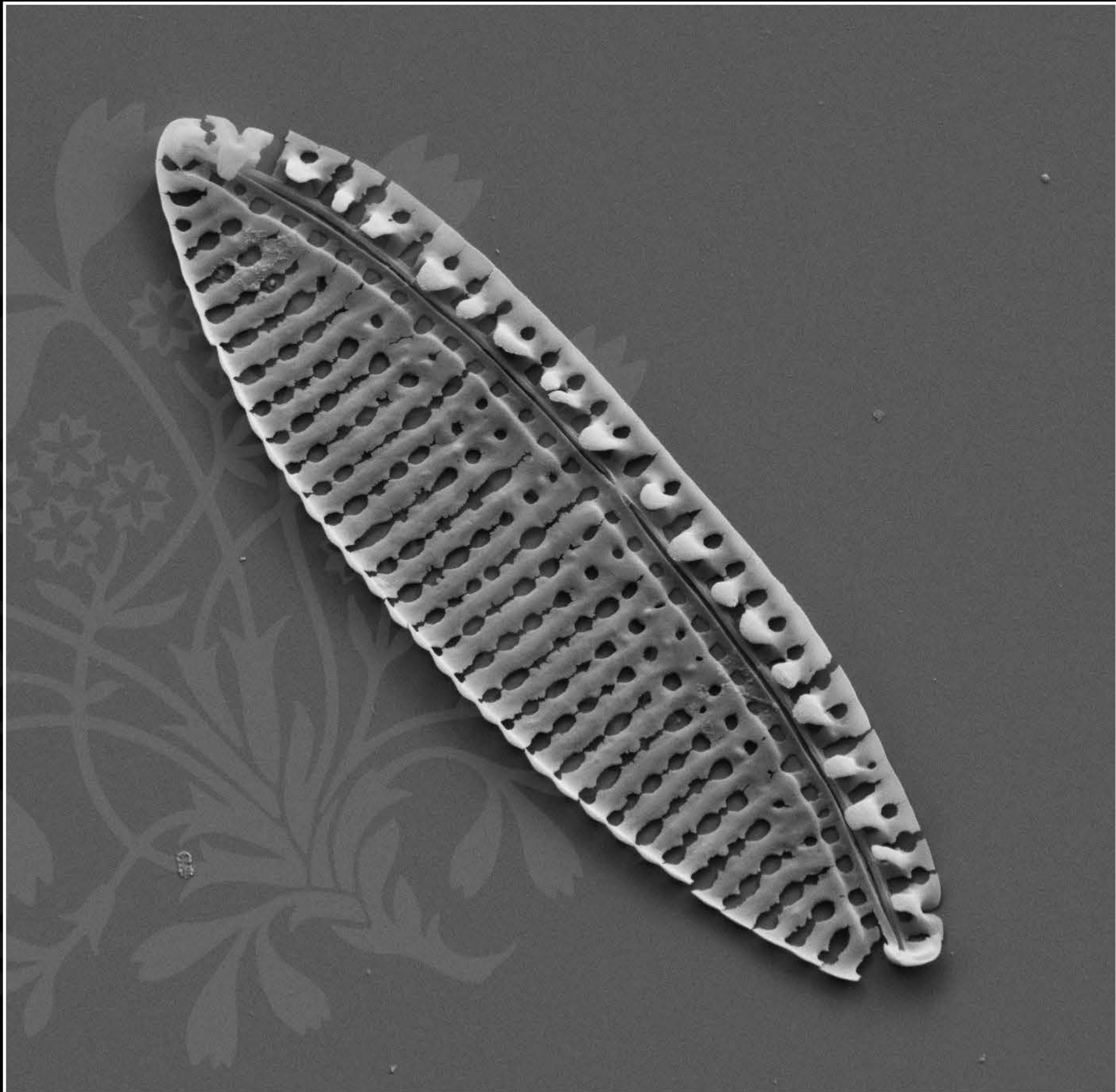
Signal A = SE2 Date : 16 Mar 2020

WD = 4.4 mm

File Name = TCC571\_19.tif







1  $\mu$ m  
|

Mag = 5.50 K X

EHT = 5.00 kV

Signal A = SE2 Date : 16 Mar 2020

WD = 4.4 mm

File Name = TCC571\_20.tif

